

HOW TO READ YOUR METER

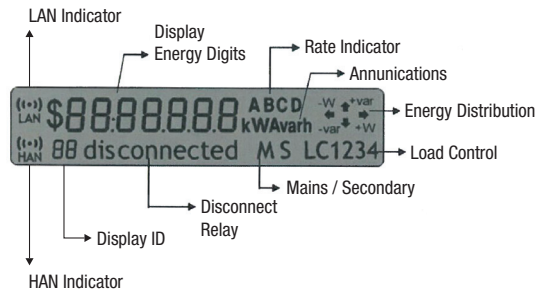
Dual Phase 420 AMI (Advanced Metering Infrastructure) Meter



Reading the display:

- 1 Screen
- 2 Scroll Button
- 3 Hot Water Boost Button
- 4 Optical Port

Reading the screen:



AMI meters feature a scroll button. Pressing the scroll button lightly prompts the device to commence scrolling through a list – as follows:

Display ID		Meter Program ID 4102	Meter Program ID 4102 (Solar)
88	Display Test	✓	✓
1	Time (hh:mm:ss)	✓	✓
2	Date	✓	✓
3	Total kWh	✓	✓
4	Total Peak kWh (07.00AM to 11.00PM Monday to Friday)	✓	✓
6	Total Off Peak kWh (11.00PM to 07.00AM Monday to Friday and all day Saturday and Sunday)	✓	✓
7	Controlled load Contactor load (hot water and/or heat bank)	✓	✓
13	Total kWh exported	✗	✓
14	Total kWh exported (07.00AM to 11.00PM Monday to Friday)	✗	✓
16	Total kWh exported (11.00PM to 07.00AM Monday to Friday and all day Saturday and Sunday)	✗	✓

The kilowatt hours (kWhrs) number displayed on the meter is cumulative. To determine actual consumption for a particular period, you must take a reading at the start and end of the required period and then subtract the initial kWhrs reading from the final kWhrs.

Pressing the “hot water boost” button can allow you to re-heat a hot water tank if this functionality is available at your property. The hot water boost function will operate for four (4) hours after being pressed and will record consumption at the Day/Peak rate.

Please Note: The energy generated by your solar system will be consumed first by your installation. Any surplus generation will flow back through the meter where it will be measured as it is exported to the grid. The meter will only record exported kWhrs if the electricity generation exceeds consumption during a particular time interval.

HOW TO READ YOUR METER

Multiphase 430 AMI (Advanced Metering Infrastructure) Meter



AMI meters feature a scroll button. Pressing the scroll button lightly prompts the device to commence scrolling through a list – as follows:

Display ID		Meter Program ID 4306	Meter Program ID 4932 (Solar)
		Note: Load control set for 11PM to 7AM operation (energy used recorded in register 6)	Note: Load control set for 11PM to 7AM operation (energy used recorded in register 6)
88	Display Test	✓	✓
1	Time (hh:mm:ss)	✓	✓
2	Date	✓	✓
3	Total kWh	✓	✓
4	Total Peak kWh (07.00AM to 11.00PM Monday to Friday)	✓	✓
6	Total Off Peak kWh (11.00PM to 07.00AM Monday to Friday and all day Saturday and Sunday)	✓	✓
13	Total kWh exported	✗	✓
14	Total kWh exported (07.00AM to 11.00PM Monday to Friday)	✗	✓
16	Total kWh exported (11.00PM to 07.00AM Monday to Friday and all day Saturday and Sunday)	✗	✓

The kilowatt hours (kWhrs) number displayed on the meter is cumulative. To determine actual consumption for a particular period, you must take a reading at the start and end of the required period and then subtract the initial kWhrs reading from the final kWhrs.

Pressing the “hot water boost” button can allow you to re-heat a hot water tank if this functionality is available at your property. The hot water boost function will operate for four (4) hours after being pressed and will record consumption at the Day/Peak rate.

Please Note: The energy generated by your solar system will be consumed first by your installation. Any surplus generation will flow back through the meter where it will be measured as it is exported to the grid. The meter will only record exported kWhrs if the electricity generation exceeds consumption during a particular time interval.